



Mike DeWine, Governor | Jim Tressel, Lt. Governor | Matt Damschroder, Director

FOR IMMEDIATE RELEASE

December 11, 2025

MEDIA CONTACTS:

Tom Betti: 614-728-9645

Thomas.Betti@jfs.ohio.gov

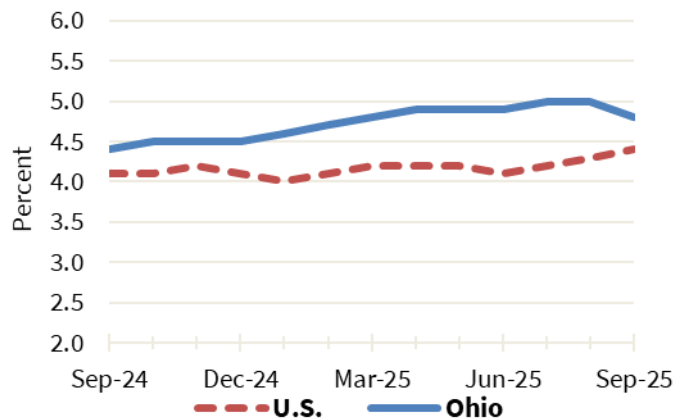
Bill Teets: 614-403-2331

Bill.Teets@jfs.ohio.gov

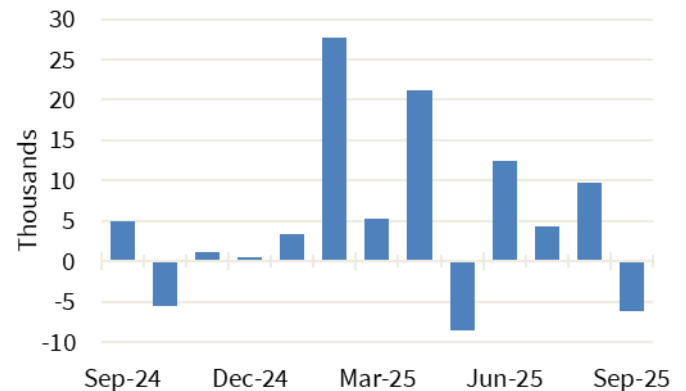
Ohio's September Unemployment Rate Decreases to 4.8%

Ohio's unemployment rate was 4.8% in September 2025, down from 5.0% in August 2025. Ohio's nonagricultural wage and salary employment decreased 6,200 over the month, from a revised 5,730,000 in August to 5,723,800 in September.

**Ohio and U.S. Unemployment Rates,
seasonally adjusted, September 2024 – September 2025**



**Ohio Nonfarm Payroll Employment Over-the-Month Change,
seasonally adjusted, September 2024 – September 2025**



Household Survey Data

The number of workers unemployed in Ohio in September was 287,000, down from 295,000 in August 2025. The number of unemployed has increased by 26,000 in the past 12 months from 261,000. The September unemployment rate for Ohio increased 0.4 percentage points from 4.4% in September 2024.

The U.S. unemployment rate for September 2025 was 4.4%, up from 4.3% in August 2025 and up from 4.1% in September 2024.

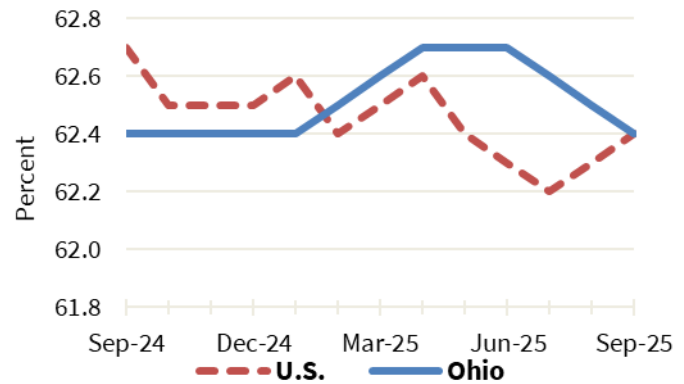




Mike DeWine, Governor | Jim Tressel, Lt. Governor | Matt Damschroder, Director

In September 2025, the labor force participation rate in Ohio was 62.4%, down from 62.5% in August 2025 and unchanged from 62.4% in September 2024. During the same period, the national labor force participation rate was 62.4%, up from 62.3% in August 2025 and down from 62.7% in September 2024.

Ohio and U.S. Labor Force Participation Rates,
seasonally adjusted, September 2024 – September 2025



Establishment Survey Data

Ohio's nonagricultural wage and salary employment decreased 6,200 over the month, from a revised 5,730,000 in August to 5,723,800 in September, according to the latest business establishment survey conducted by the U.S. Department of Labor (Bureau of Labor Statistics) in cooperation with the Ohio Department of Job and Family Services (ODJFS).

Employment in goods-producing industries, at 960,600, decreased 800 over the month in manufacturing (-500) and construction (-300). Mining and logging did not change over the month. The private service-providing sector, at 3,972,700, decreased 1,200 as losses in private educational and health services (-4,000); leisure and hospitality (-1,800); other services (-1,200); and information (-200) outweighed gains in professional and business services (+3,800); trade, transportation, and utilities (+2,100); and financial activities (+100). Government employment, at 790,500, decreased 4,200 in state (-3,900); local (-200); and federal (-100) government.

From September 2024 to September 2025, nonagricultural wage and salary employment increased 65,400. Employment in goods-producing industries increased 17,500, led by construction, which added 12,200 jobs. Manufacturing added 5,400 jobs, in durable goods (+4,500) and nondurable goods (+900). Mining and logging lost 100 jobs over the year. Employment in the private service-providing sector increased 49,400 as gains in private educational and health services (+17,100); trade, transportation, and utilities (+15,000); professional and business services (+9,600); financial activities (+6,200); other services (+2,900); and information (+1,200) surpassed losses in leisure and hospitality (-2,600). Government employment decreased 1,500 over the year, as losses in federal government (-2,500) outweighed gains in state (+500) and local (+500) government.

EDITOR'S NOTE: All data cited are produced in cooperation with the U.S. Department of Labor. Data sources include the Current Population Survey (U.S. data), Current Employment Statistics Program (nonagricultural wage and salary employment data), and Local Area Unemployment Statistics Program (Ohio unemployment rates). More complete listings of the data appear in the monthly Ohio Labor Market Review. Unemployment rates for all Ohio counties, as well as cities with populations of 25,000 or more, are presented in the monthly ODJFS Civilian Labor Force Estimates publication. Updated statewide historical data can be obtained through the OhioLMI app, which is available for free on mobile devices



Mike DeWine, Governor | Jim Tressel, Lt. Governor | Matt Damschroder, Director

through the App Store or Google Play. Ohioans can access tens of thousands of job openings, for positions ranging from file clerks to CEOs, at <https://ohiomeansjobs.ohio.gov>.

News Release Dates

A calendar of 2025 release dates is available online at <https://ohiolmi.com/Home/Events>. Revised release dates will be updated as they become available.

County, city, and metropolitan area unemployment rates for September 2025 will be posted online at <https://ohiolmi.com> on Tuesday, December 16, 2025. Establishment survey data for October 2025 will be published with the November 2025 data at a future date that is still to be determined. Household survey data were not collected for the October 2025 reference period due to a lapse in federal government appropriations and will not be collected retroactively.

Choose this link to view the table on the [Ohio and U.S. Employment Situation](#).

Choose this link to view the table for the [Nonagricultural Wage and Salary Employment Estimates for Ohio](#).

-30-

The Ohio Department of Job and Family Services manages vital programs that strengthen Ohio families. These include job training and employment services, unemployment insurance, cash and food assistance, adult protective services, and child support services.

